
PROJECT

Hanomag Business Lofts
Hanover

LIGHT PLANNER

Studio DL, Hanover

Dynamically illuminated

Hanomag – the Hannoversche Maschinenbau AG – is not only known to Hanoverians. The company's former administration building, built in the 1920s, was recently extensively renovated and converted into business lofts.

The historic building was deliberately complemented with modern elements, which are consistently made of anthracite-coloured metal throughout the building.

Part of the lighting concept is the dynamic LED-Linargo as a continuous pendant luminaire, which follows the path through the building and emits both direct and indirect light. The beautiful cross vaults are thus optimally staged, but at the same time posed a challenge, because in some cases there were only suspension points every four metres. In the entrance area of the complex, the LED Luc spotlights integrated on the LED-Linargo set additional accents.

In the same look as the suspended LED-Linargo with grey-coated aluminium profile, there are LED-LightLines again as vertical, straight wall luminaires in the stairway on the newly installed metal staircase.



HANOMAG BUSINESS LOFTS

Hanover



CROSS VAULT

LED-Linargo | straight + curved



LED-LINARGO | PENDANT LUMINAIRES

Pictures + product informations

LED-Linargo | straight + curved

- Pendant luminaire LED-Linargo direct/indirect, 38 x 80 mm [WxH], aluminium DB703 coated, satin PMMA cover, LED White, 4000 K, light beam angle 120°, max. 31 W/m direct, 24 W/m indirect, CRI > 80, 163 lm/W, seperately switch-/dimmmable, DALI
- Continous strip arrangement in partial lengths of max. 4,7 m
- 137 running metres straight version
35 running metres cirved version

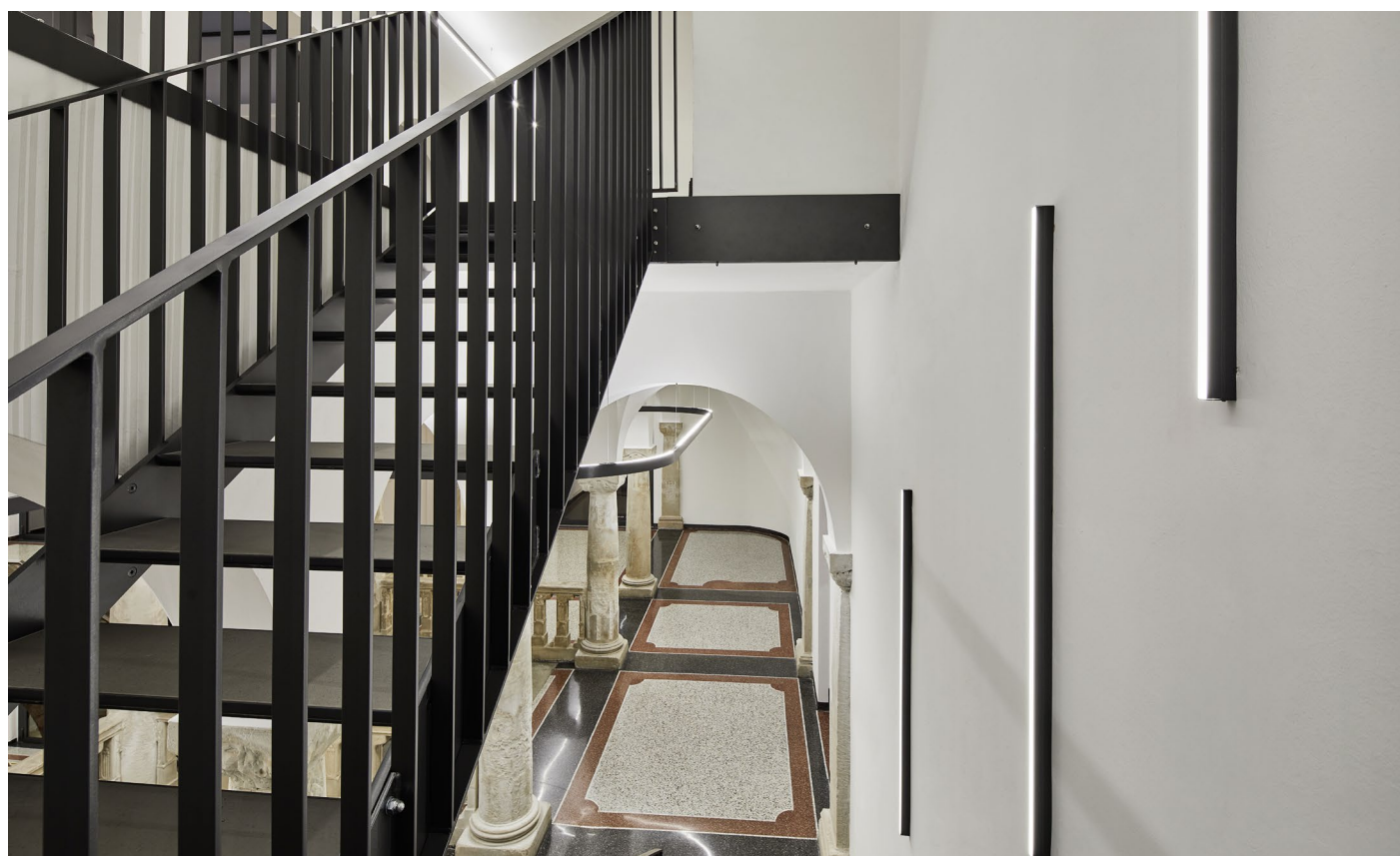


LED-LIGHTLINE | WALL LUMINAIRES

Pictures + product informations

LED-LightLine as wall luminaire

→ 6 units LED-LightLine LLF 20.40, straight version, 1500 x 20 x 40 mm [LxWxH], aluminium DB703 coated, satin PMMA cover, LED White, 4000 K, 14,4 W/m, dimmable, DALI



LED-LUC | INTEGRATED IN LED-LINARGO

Pictures + product informations

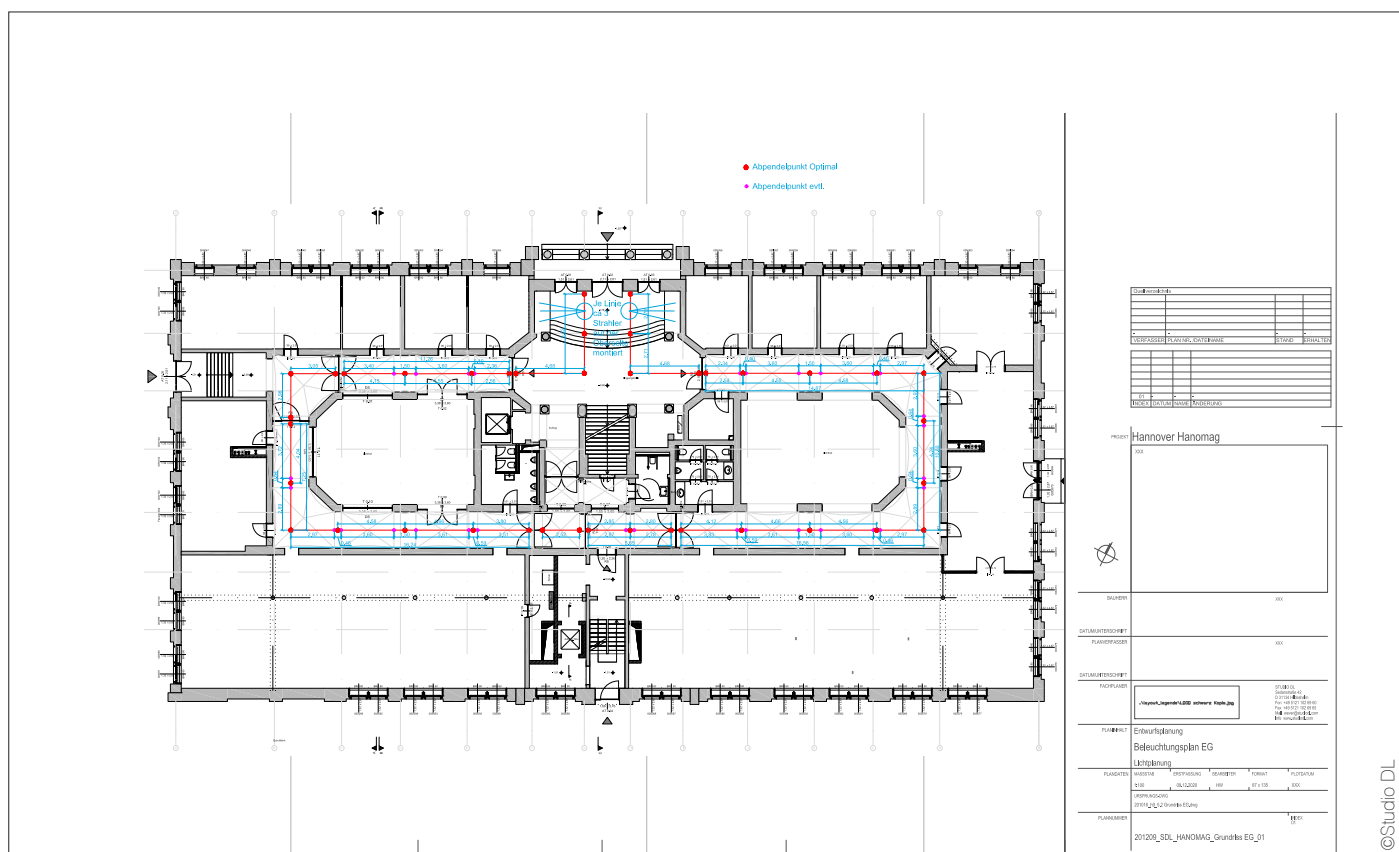
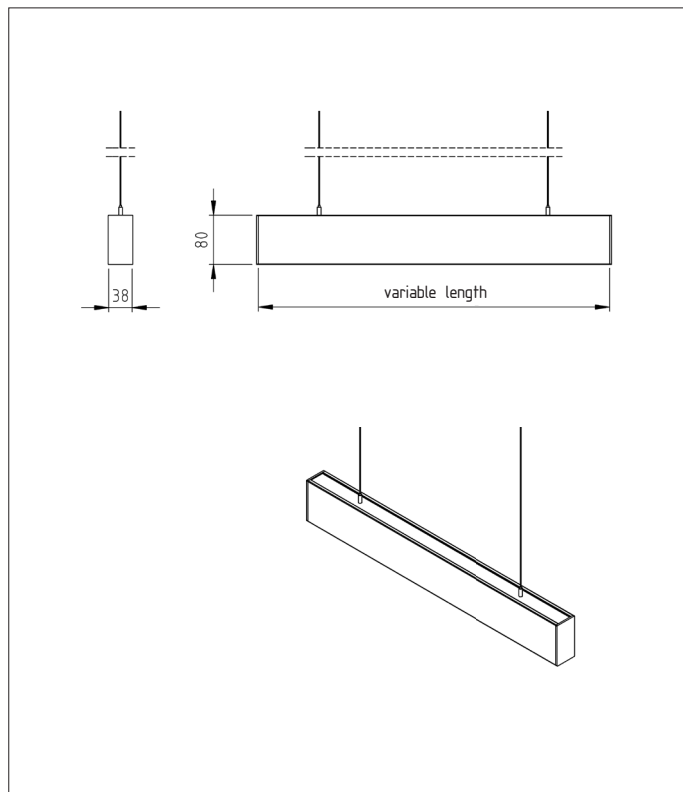
LED-Luc | flexible spot

→ 6 units LED-Luc 60-1 spots, integrated in LED-Linargo, fully rotatable/titling spot with ball joint, aluminium housing powder-coated according to RAL, LED white, 4000 K, max. 9 W, cc 250 mA, reflector 30°, can be dimmed/switched seperately, including DALI power supply unit

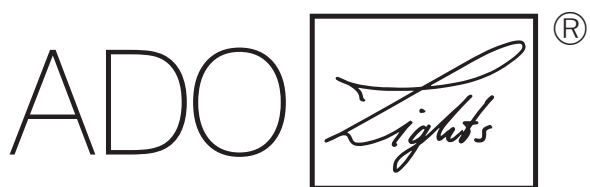


TECHNICAL DRAWINGS

LED-Linargo + ground floor plan



TTC Timmler Technology GmbH
Christian-Schäfer-Straße 8
D-53881 Flammersheim [Cologne/Bonn]
T +49 2255 9212-00
F +49 2255 9212-99
E info@ado-lights.com
I www.ado-lights.com
www.led-luc.com



by TTC Timmler Technology

