
PROJECT

KAI 8B
Düsseldorf

ARCHITECT
Structurelab, Düsseldorf

An elegant eyecatcher

During the day, the monolithic, shiny black building appears restrained among the partly colourful, partly exalted buildings in Düsseldorf's trendy Medienhafen. But at night, light and colour suddenly come into play.

The stairwell, for example, is not only bathed into light by the light lines attached to the flights of stairs, but even resembles light art when viewed from the outside. The night-time façade lighting of the glass cube also comes from inside. For this purpose, the convector shafts behind the glass façade were covered with homogeneous TTC linear gratings, which correspond to the covers of the external façade gutters over all floors, and were also combined with LED ConLights. The luminaire inserts, mounted flush between the linear gratings at each of the façade joints, are each equipped with three LEDs in RGB and covered with glass so that they can be walked on.



NIGHT LIGHTING ON FAÇADE AXES

LED Floor Luminaires, LED ConLight + homogeneous TTC Linear gratings for convector shaft covering

LED Floor Lighting | Ground floor

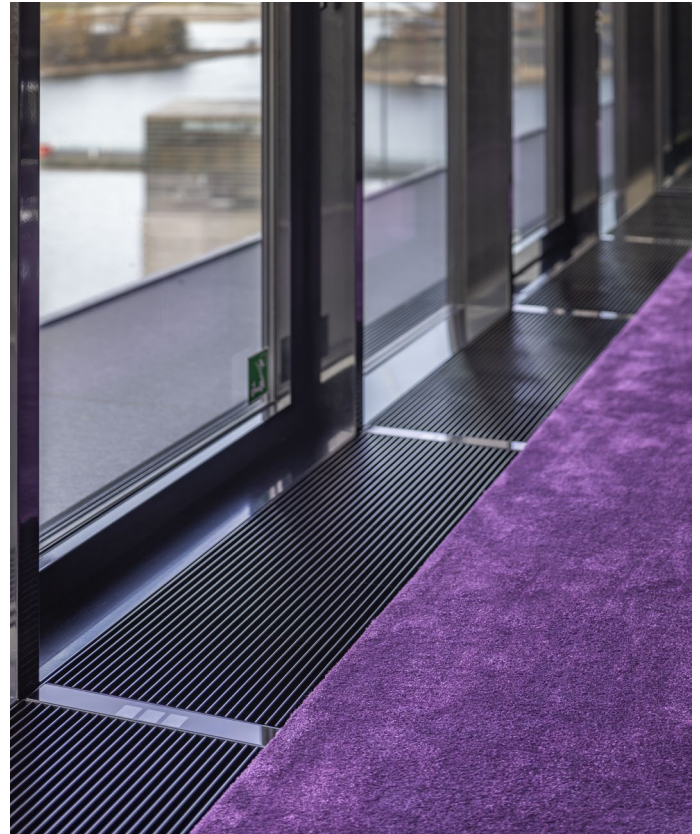
NIGHT LIGHTING

- 14 units LED floor luminaires type LF15.6-RGB, 150x60x120 mm [L x W x H], cover with VSG safety glass with black passepartout print, 3 x RGB 3in1 each, 350 mA, 11 W, IP67, can be rolled over by car up to 1.5 t, DALI dimmable, incl. stainless steel floor recessed housing and external power supply

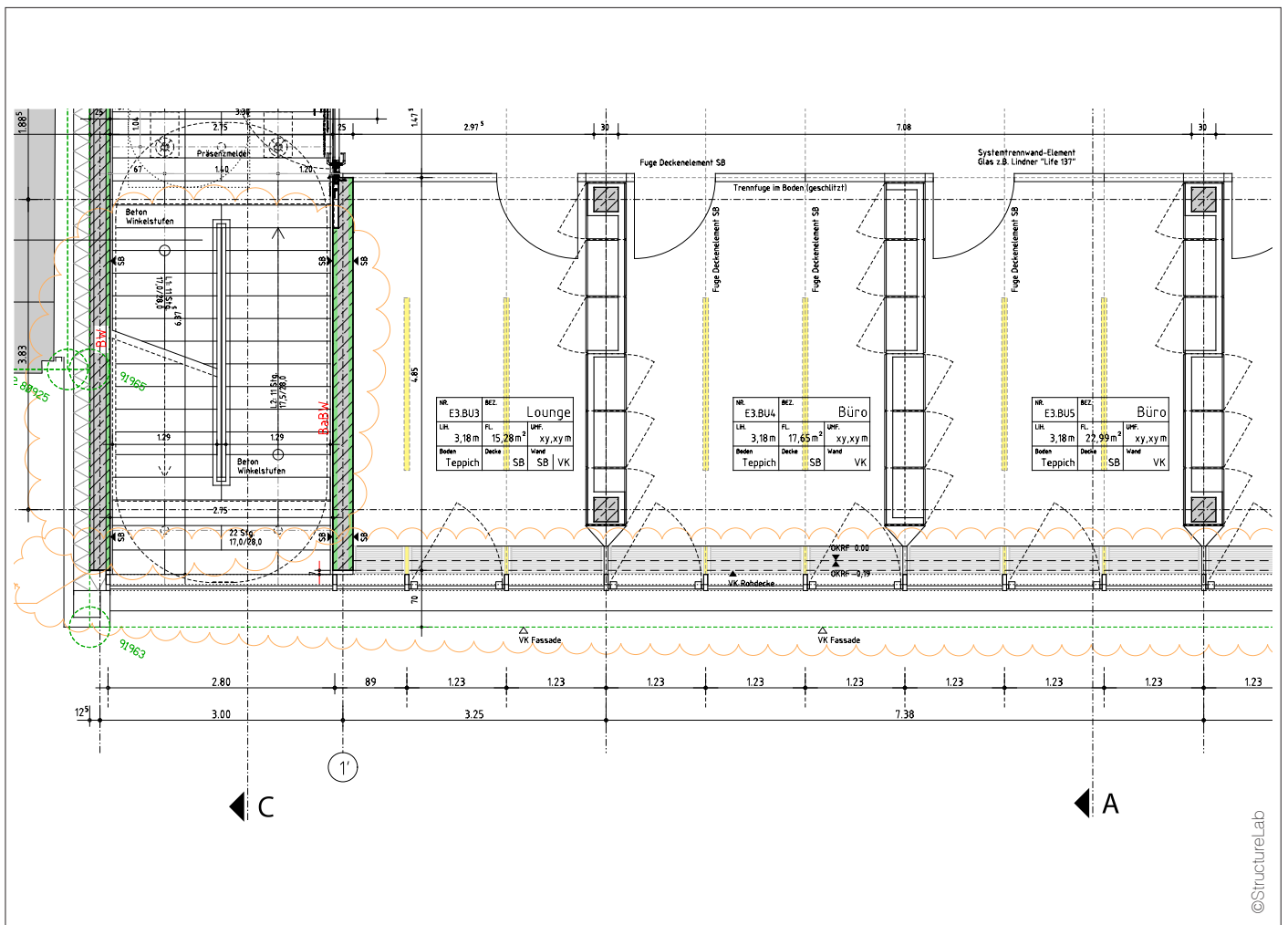
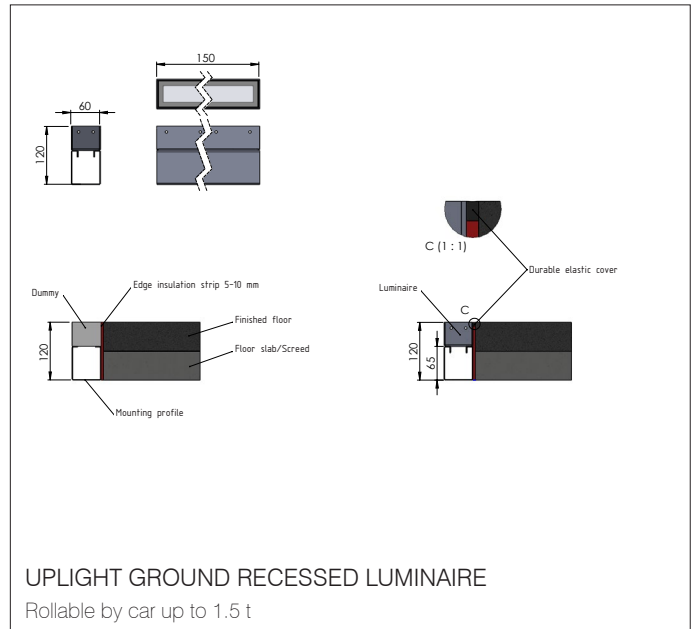
LED ConLight + TTC Linear gratings

NIGHT LIGHTING + CONVECTOR COVER

- 121 units LED ConLight, light inserts for convector shafts, 342x50x18/37 mm [L x W x H], 8 mm toughened safety glass with black passepartout print and edge trim on long side to convector grille; 3 x RGB 3in1 each, 350 mA, 11 W, IP65
- 190 metres TTC linear grilles type KSF18.3.77 made of aluminium with RAL 9005 silk-gloss powder-coating, flat profile 18/3 mm, 10 mm profile spacing = 77 % free air passage, profiles welded without rattling on combs, total height 37 mm, constant profile spacing also to frame edge, aluminium angles continuously mounted on on-site chamfered convector shafts with mounting for LED ConLights on façade joints

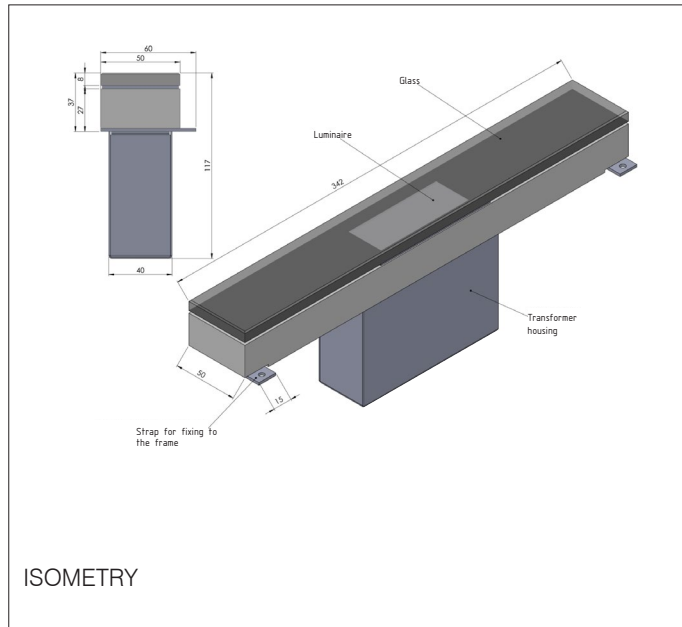


Pictures + technical drawings



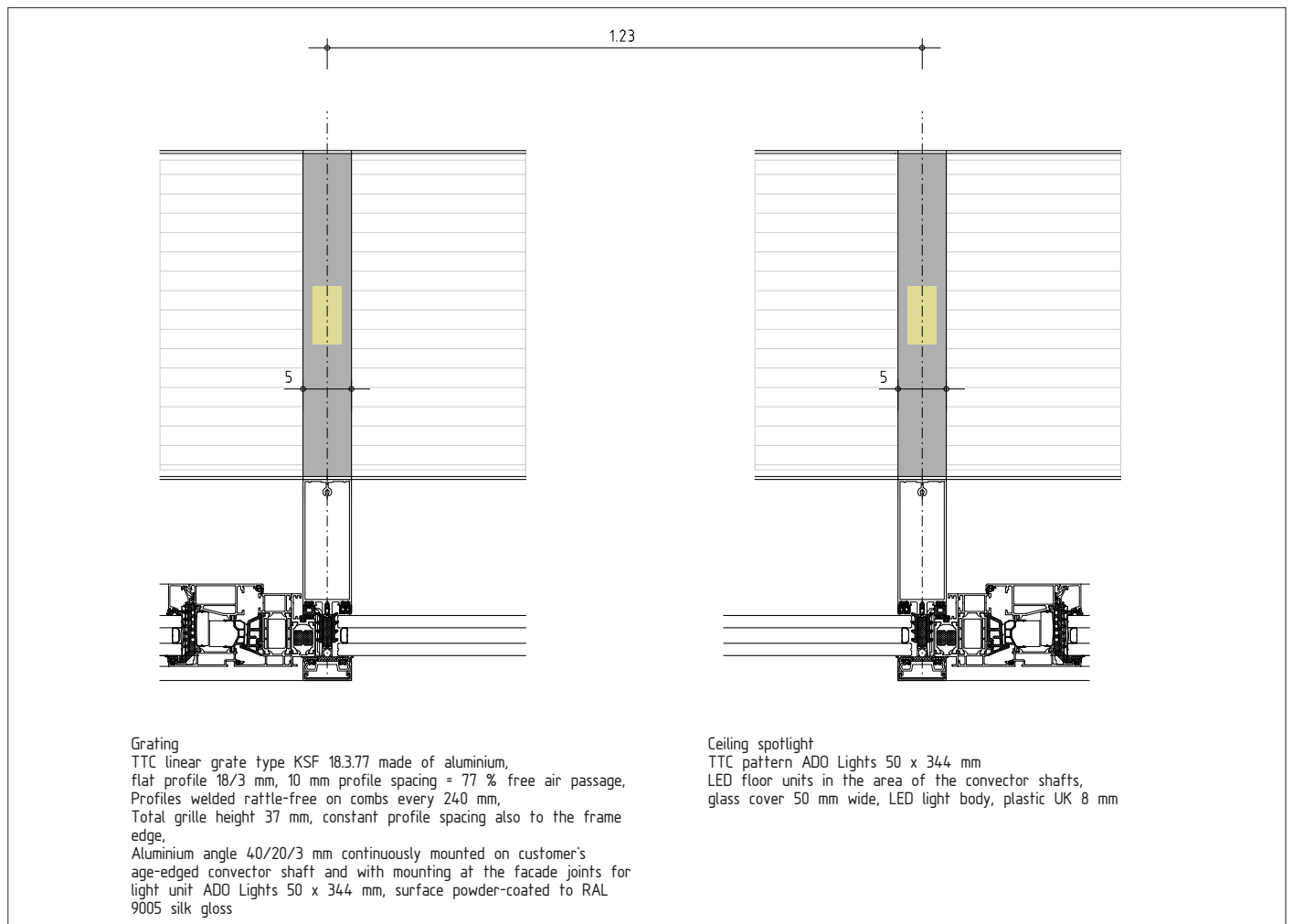
CONLIGHT

Pictures + technical drawings



CONLIGHT

Walk-on floor spotlight for installation in combination with TTC grids



.....

LIGHTING STAIRCASE + HANDRAILS ROOF TERRACE

LED LightLines

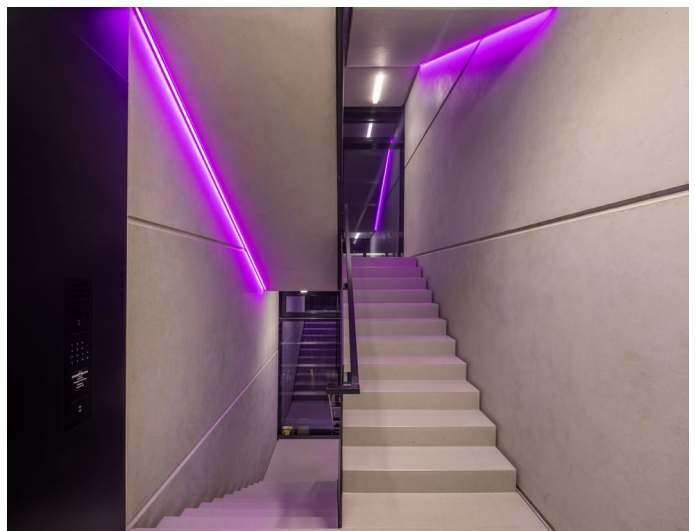
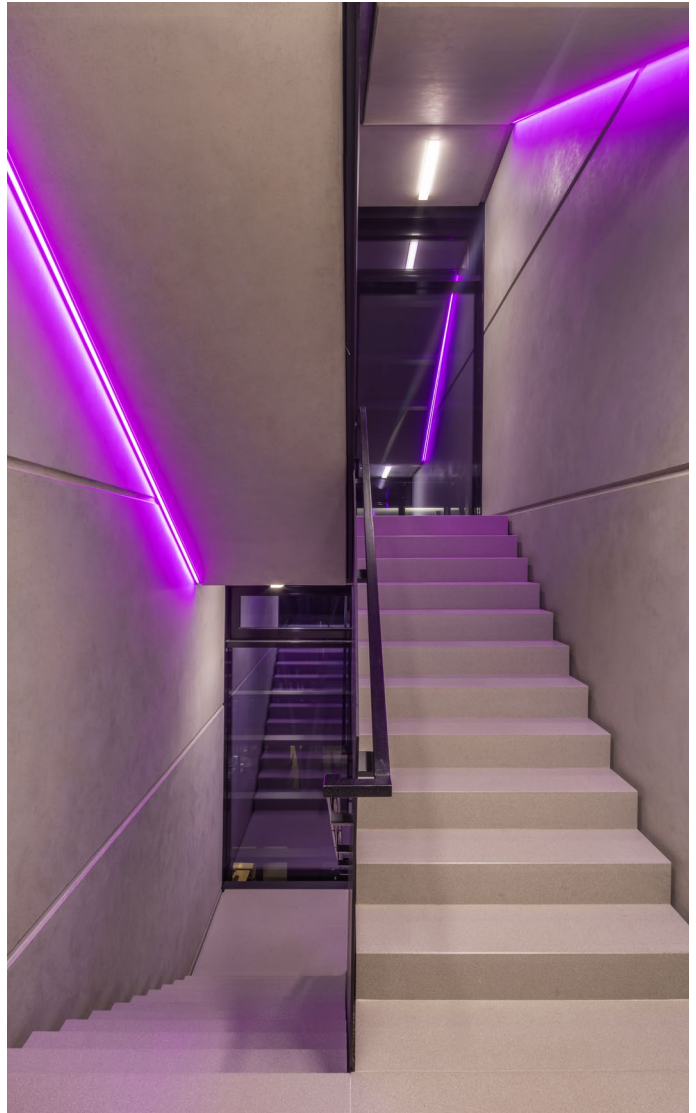
.....

Staircase

- 47 metres LED surface mounted light line type LLF 40.20, 40x20 mm [WxH], in lengths of 3,600 mm, natural anodised aluminium, opaque moulded, PMMA cover, LED RGB+W 4,000 K, 19W/m, 24 VDC, IP44, DALI dimmable, incl. magnetic mounting + power supplies

Handrails roof terrace

- 12 metres LED surface mounted light line type LLF 40.20, aluminium profile 20 mm wide, natural anodised, in various [max. 2,005 mm], total height 53 mm, opaque moulded, SMD LED white 4,000 K, 19W/m, 24 VDC, IP67, incl. magnetic mounting



DRAINAGE + COOLING

TTC Façade/Slotted channels, homogeneous TTC Linear gratings + GraviVent® – silent gravity cooling

Façade drainage

FAÇADE

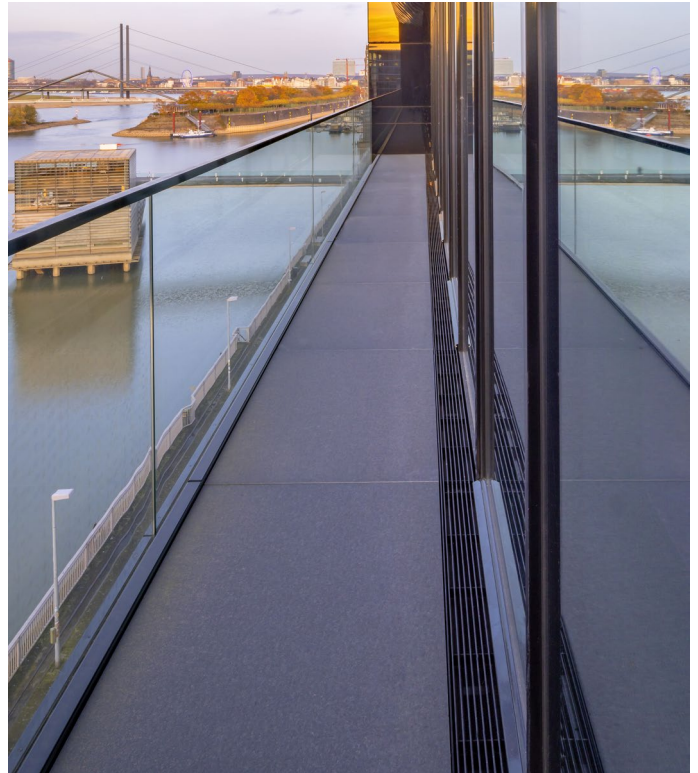
- 21 metres TTC façade channels type FR10/K, trafficable up to 10 Kn wheel load, channel height 125 mm, width 100/90 mm, length 1,215/1,230 mm, with drain socket DN70
- 19 metres TTC linear gratings type KSF18.3.77 (see p. 3) surface black burnished, height 40 mm
- 2.5 metres TTC slotted channels type SR15/1, black steel, trafficable, with drain socket DN70, slot height 80 mm, slot spacing 11 mm, channel height 120 mm

BALCONIES

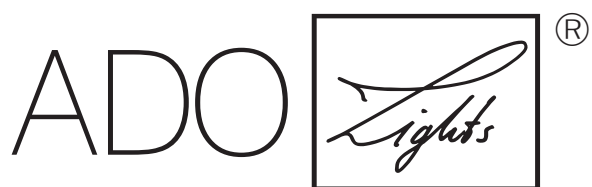
- 105 metres TTC linear gratings type KSF (see p. 3), 5 units, 20,910x100 mm in 17 pieces 1,230 mm each, bar run in longitudinal direction, aluminium angles welded on both sides

TTC GraviVent® – silent gravity cooling

- 5 units TTC GraviVent® type ISHK-W 20.51.2L/R2
Cooling case: 1.35 m active fall duct height, flow/return temperature 12/16 °C, room temperature 26 °C, cooling capacity 1,000 W



TTC Timmler Technology GmbH
Christian-Schäfer-Straße 8
D-53881 Flammersheim [Cologne/Bonn]
T +49 2255 9212-00
F +49 2255 9212-99
E info@ado-lights.com
I www.ado-lights.com
www.led-luc.com



by TTC Timmler Technology

