
PROJECT

One Cologne
Cologne

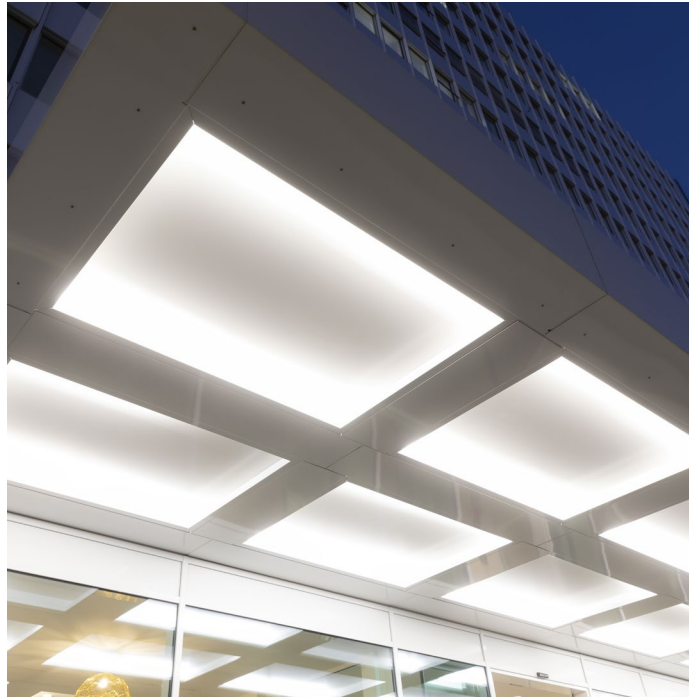
ARCHITECT | INTERIOR ARCHITECT | CLIENT

HPP Architekten, Düsseldorf | JOI-Design, Hamburg | development partner, Düsseldorf

Follow the Light

The One Cologne building is one of the few high-rise buildings in Cologne and thus definitely a landmark in the cityscape. To create a friendly reception, a luminous ceiling made of LED-Around surface luminaires was installed in the cantilevered canopy, distributing the light glare-free over the entire entrance area via microprisms.

Another accent was set with an LED-LightLine that traces the contour of the lift shaft and at the same time illuminates the relief-like wall cladding.



LED-AROUND + LED-LIGHTLINE

Entrance area and accent lighting

Canopy

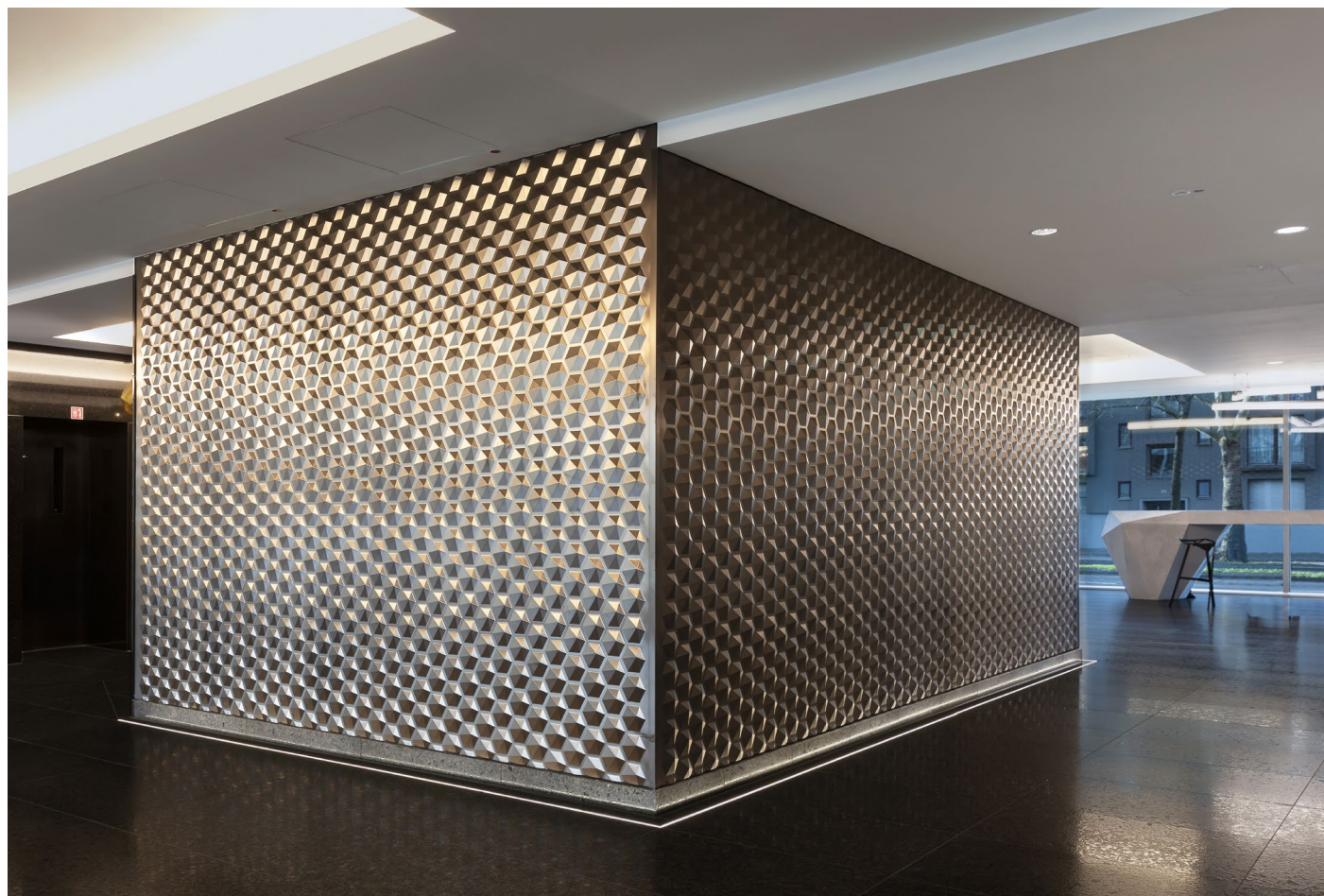
- Approx. 66 m LED-Around, surface area luminaire built into canopy, glare-free light distribution due to PMMA microprismatic optics, LED white 4,000 K, 19 W/m, IP44, aluminium mounting profile with internal cable routing, visible aluminium parts powder-coated to RAL 9016 matt

Lift

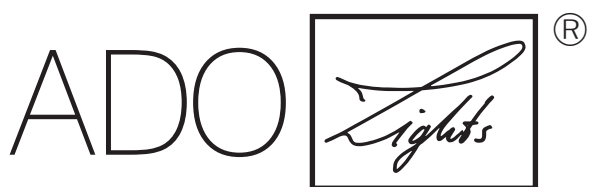
- Approx. 27 m recessed LED-LightLine type LLF 12.30, 12x30 mm [WxH], in various lengths [2 units each 5,840 mm, 4 units each 3,730 mm], recessed in floor, aluminium U-profile, opaque moulded, homogeneous light spread without dark spots at divisions, LED white 2,700/3,000/4,000 K, 19 W/m, IP68

Counter

- Approx. 3,5 m surface-mounted LED-LightLine type LLF 7.17, 7x17x1,720 mm [WxHxL], aluminium U-profile, PMMA opaque moulded, LED white 3,000 K, 14 W/m



TTC Timmler Technology GmbH
Christian-Schäfer-Straße 8
D-53881 Flammersheim [Cologne/Bonn]
T +49 2255 9212-00
F +49 2255 9212-99
E info@ado-lights.com
I www.ado-lights.com
www.led-luc.com



by TTC Timmler Technology

