
LED-HL-10 AL

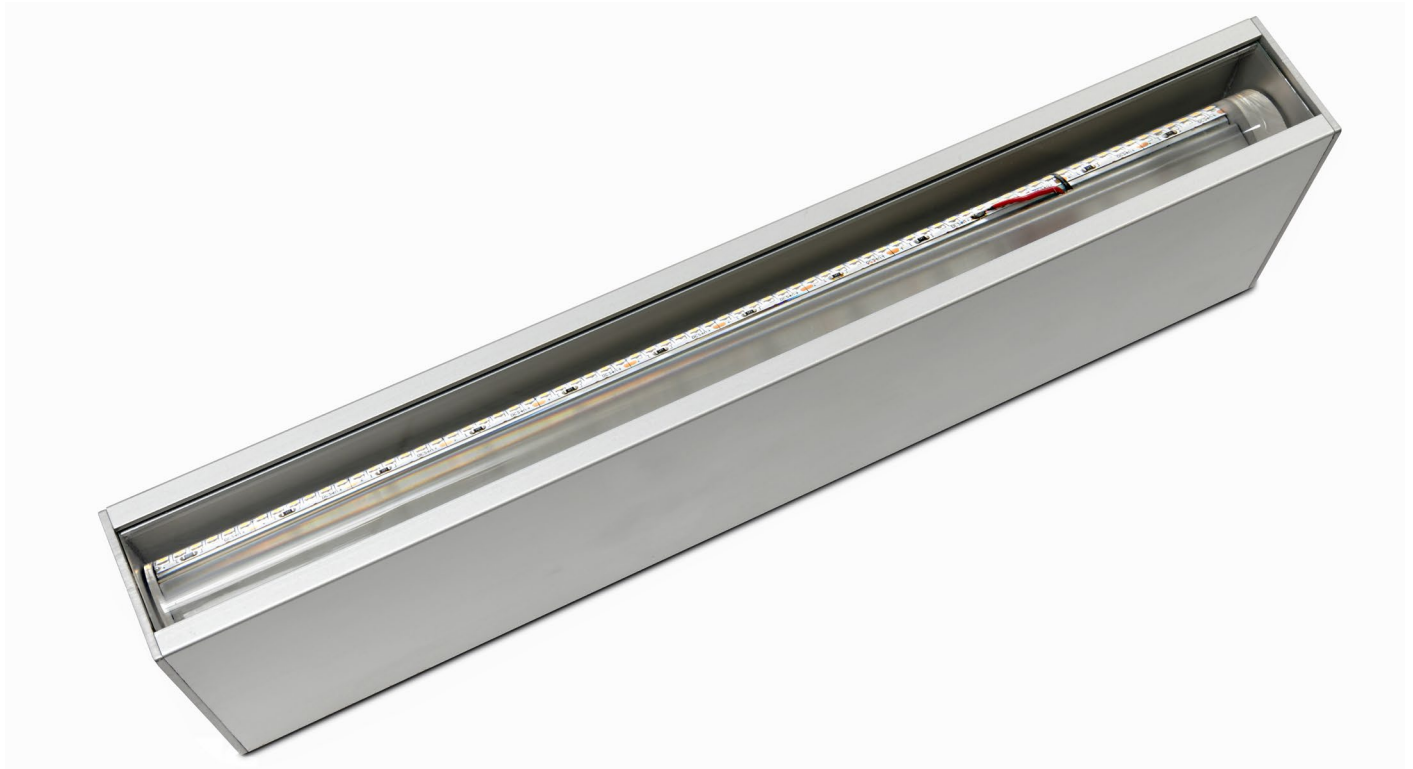
Surface Mounted Luminaire
Aluminium

LED-HL-10 AL

Surface Mounted Luminaire
Aluminium



PICTURES



LED-HL-10 AL

Surface Mounted Luminaire

Aluminium



BASE INFORMATION, GENERAL TECHNICAL SPECIFICATION
AND TECHNICAL DRAWINGS

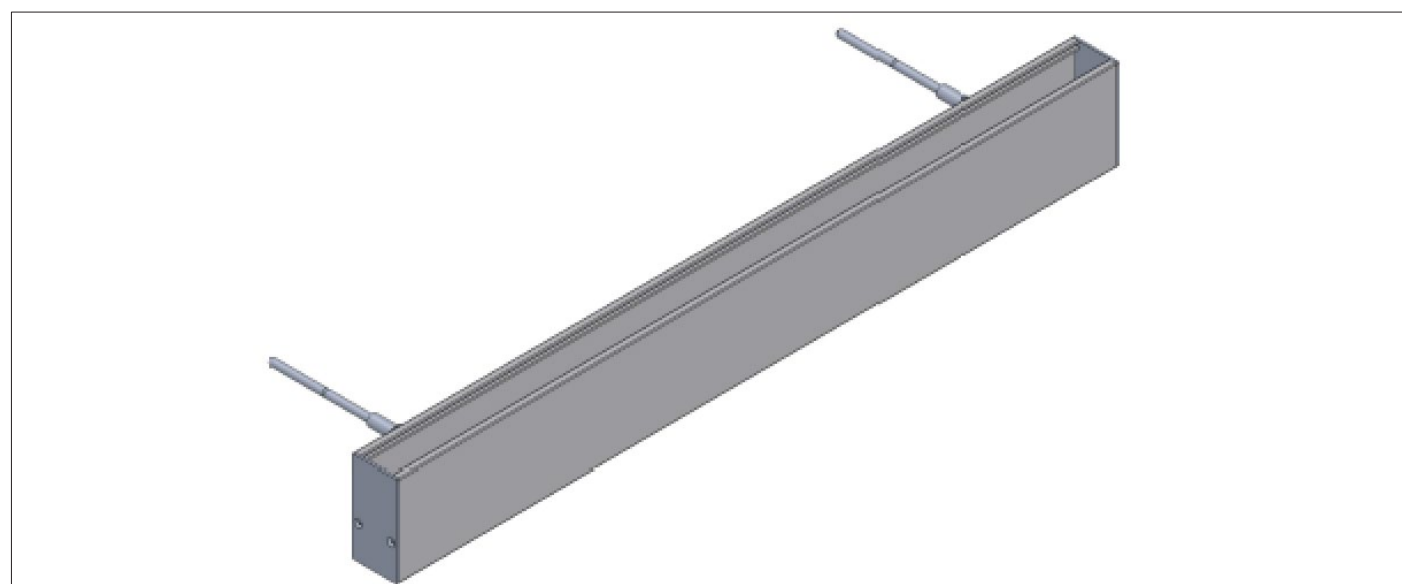
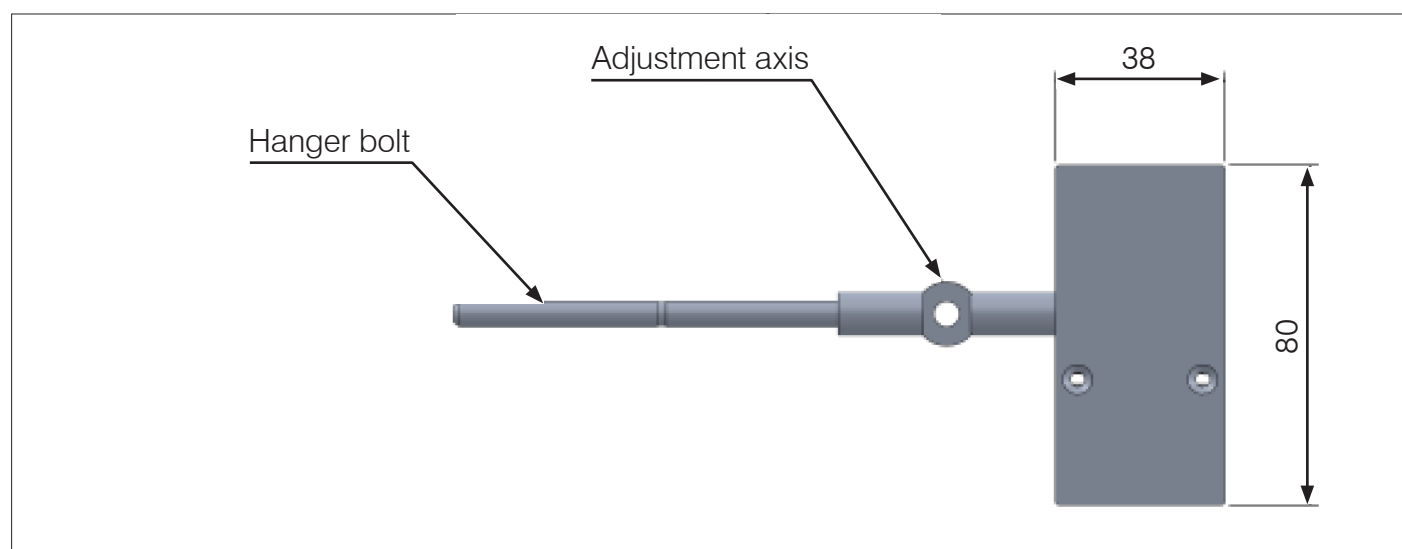


LED-HL-10 AL | Façade in the focus

This LED surface mounted luminaire generates an effect. It can be used to immerse façades in light. Dark exterior areas become a thing of the past. The LED surface mounted luminaire is well-designed, apparent like an object and achieves a maximum effect as a wall-washer for façade illumination.

Features

- For private residences, mansions, parcs, gardens, churches, castles and historical buildings
- Housing in aluminium for exterior use
- Suitable for emergency lighting systems according to EN50172
- Narrow light colour tolerances
- Narrow light beam angle for targeted illumination

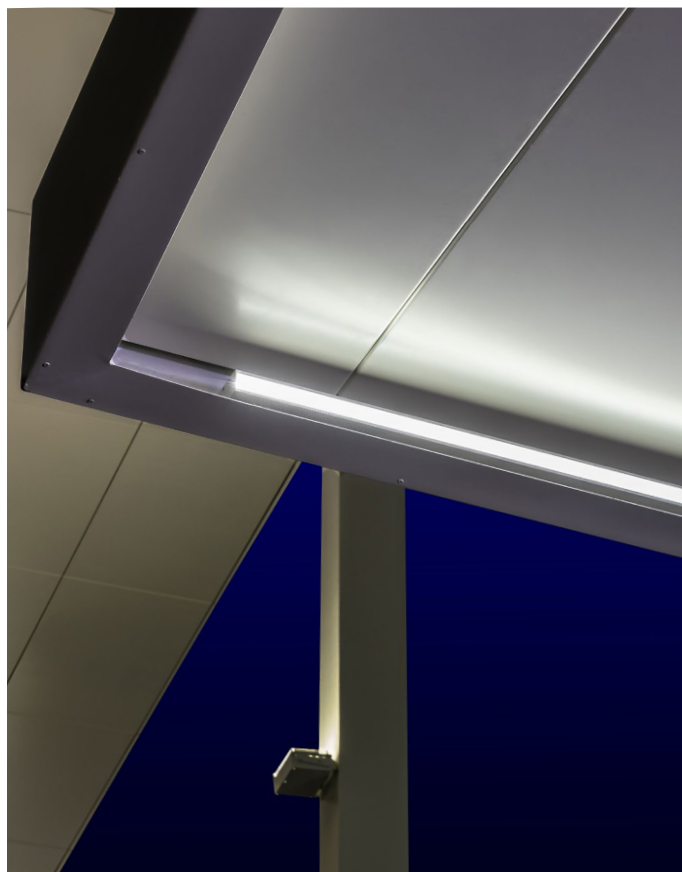


LED-HL-10 AL

Surface Mounted Luminaire
Aluminium

ADO 

PICTURES



LED-HL-10 AL

Surface Mounted Luminaire

Aluminium

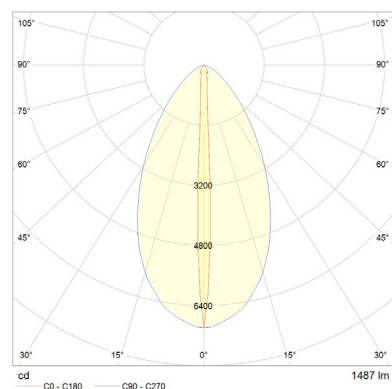


BASE INFORMATION, GENERAL TECHNICAL SPECIFICATION
AND TECHNICAL DRAWINGS



DIMENSIONS [L X W X H]	STANDARD: 1,000/1,500 x 80 x 120 mm Special sizes upon request	CONTROL INTERFACE	Depending on ballast compatible to each interface as DMX 512, DALI, 1–10V etc.
POWER CONSUMPTION	See diagram	IP RATING	IP54/IP65
LUMINOUS FLUX	Module efficiency 98 lm/W [at 4,000K] See diagram	LUMINAIRE HOUSING	Aluminium anodised, black anodised or powder-coated according to RAL ESG security glass
OPERATING VOLTAGE	24 V DC	MOUNTING	Wall/ceiling mounts with incline adjustment
LIGHT BEAM ANGLE	10° inclination angle Ex factory configurable	CONVERTER	Overload protection Overtemperature protection Short-circuit protection Dimming adjustable in DC-mode Suitable for emergency lighting systems according to EN50172
SERVICE LIFE	LED + EVG 50,000 hours at 70 % of mean luminous flux	WEIGHT	3.2 kg [at 1,000 mm length]
COLOUR TEMPERATURE	White 3,000/4,000 Kelvin, optional RGB	LIGHT CALCULATION	EULUM data see www.ado-lights.com
CRI	CRI > 85 Narrow colour tolerance MacAdam Step 3		

LIGHT SPREAD



STANDARD

Length [mm]	Power consumption [W]	Luminous flux [lm]	Mean luminous flux [lm]	Weight [kg]
1,000	20	1,480	1,960	3.2
1,500	30	2,100	2,940	4.7

TTC Timmler Technology GmbH
Christian-Schäfer-Straße 8
D-53881 Flammersheim [Cologne/Bonn]
T +49 2255 9212-00
F +49 2255 9212-99
E info@ado-lights.com
I www.ado-lights.com
www.led-luc.com



by TTC Timmler Technology

