

---

# PROJECT

---

Exclusive Residential Estate  
Düsseldorf

# EXCLUSIVE RESIDENTIAL ESTATE

## Düsseldorf



ARCHITECTS | LANDSCAPE ARCHITECT | IMPLEMENTATION | LIGHTPLANNER

sop architekten, Düsseldorf | pink architektur, Düsseldorf | WKM Landschaftsarchitekten, Düsseldorf | Lill + Sparla, Cologne | a-g Licht, Cologne

### Living in court

In the middle of Düsseldorf's old town sits the former district and regional court, a listed building from the Wilhelmine era. After the revitalization of the building, you can find now an exclusive residential estate – an ensemble of old and new buildings, under the roofs of which many uses are combined: in addition to condominiums, you can also find a hotel and serviced apartments, plus a diverse range of catering, art and culture.

The stairs to the main entrance equipped with slot channels made of stainless steel offer a just as clean reception as the entrance mats fitted with black burnished angle frames and sideward LED light lines. The recessed floor lights in the stairwell of the hotel/apartment area are also burnished.

The highlight inside the inner courtyard is an oval basin, subtly illuminated with a curved light line in combination with drainage channels and cover grids made of stainless steel. Gutters and gratings have the same look on the passages and façades, terraces and balconies. In addition, slotted channels ensure optimal surface drainage.

### Products

- Outside stairs and entrance area of hotel/apartments: curved TTC slot channels made of stainless steel; in the main entrance reinforced door mats with black burnished angle frames, attached LED light lines on the side with black burnished stainless steel housings, glass covering with passepartout printing; inspection boxes in the matwell bases
- Staircase hotel/apartments: recessed floor luminaires in the staircase
- Inner courtyard: TTC drainage channels and grid coverings made of stainless steel on the passages, entrances, terraces; stainless steel slots for surface drainage, paveable inspection boxes with mud trap
- TTC Drainlight [LED + channels + grids] curved TTC drainage channels with grid coverings made of stainless steel and integrated light lines bordering the oval water basin





### ENTRANCE AREA HOTEL/APARTMENTS

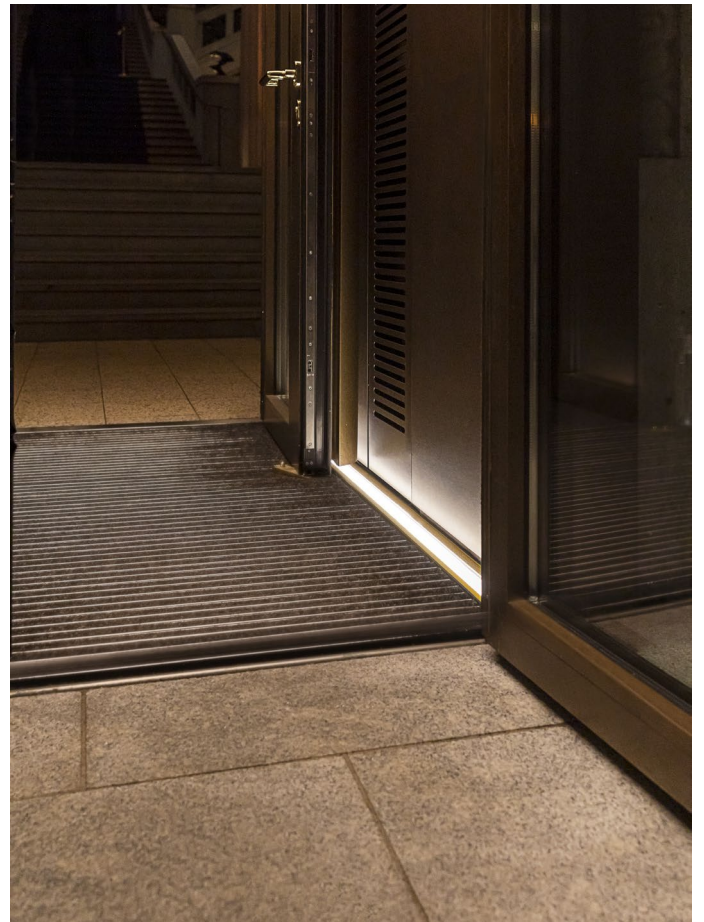
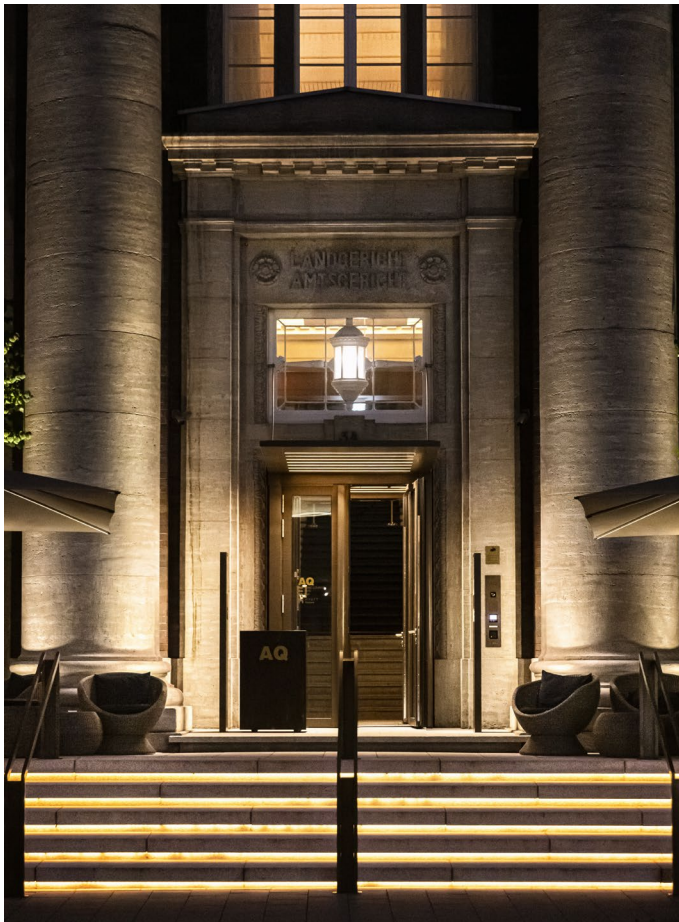
Door mats with LED light lines

#### Door mats

- ADO entrance mats type Public LSM 22/5  
2 units 2,200 x 2,165 mm, 1 unit 1,705 x 1,550 mm,  
height 22 mm, profile distance 5 mm
- Coarse-fibre rib anthracite, rollable, reinforced version,  
load carrying capacity of 3,800 kg/100 cm<sup>2</sup>
- At the front angle frames made of stainless steel,  
black burnished surface according to the housings  
of the attached LED light lines on the side
- Including connection to the light lines with inspection  
boxes in the matwell bases for the power supply units  
of the built-in lights and including black EPDM underlay  
in the matwell bases

#### LED Light Lines

- 3,000 K, asymmetric light spread by microprism optics,  
glare-free, IP rating IP65 including ballast,  
connectivity options at the front side of the mat frame  
profile, housing made of black burnished stainless steel
- 2 units recessed floor luminaires type LF-2200-WW-a  
2,000–2,200 x 80 x 80 mm (LxWxH), equipped with  
40W LEDs, VSG security glass covering with black  
passepartout printing
- 2 units recessed floor luminaires type LF-1705-WW-a  
1,705 x 80 x 80 mm (LxWxH), equipped with 30W LEDs,  
VSG security glass covering with brass-coloured  
passepartout printing
- 2 units recessed floor luminaires type LF-1000-WW-a  
800–1,000 x 80 x 80 mm (LxWxH), equipped with  
20W LEDs, VSG security glass covering with auburn  
passepartout printing

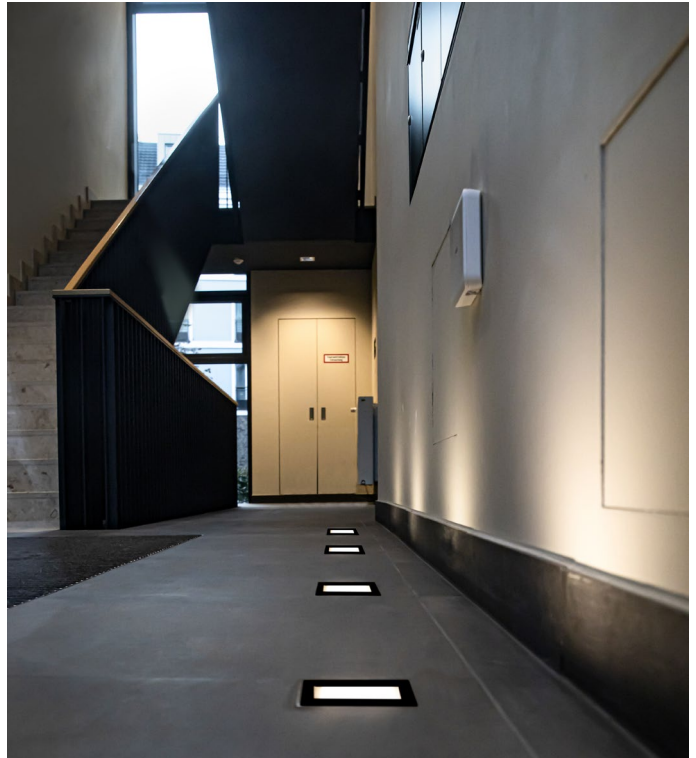


### STAIRCASE HOTEL/APARTMENTS

Recessed floor luminaires

#### Recessed floor spotlights

- Recessed floor luminaires type LF-100-WW asymmetric, 65 units, 100 x 100 x 100 mm (LxWxH), equipped with high-power LEDs 9W, 94lm/W, 3,000 K, asymmetric light spread by microprism optic, glare-free, IP rating IP65, protection class II, housing made of black burnished stainless steel, VSG security glass covering, including ballast
- Recessed floor luminaires type LF-100-WW symmetric, 8 units, 100 x 100 x 100 mm (LxWxH), equipped with high-power LEDs 9W, 94lm/W, 3,000 K, symmetric light spread by microprism optic, glare-free, IP rating IP65, protection class II, housing made of black burnished stainless steel, VSG security glass covering, including ballast



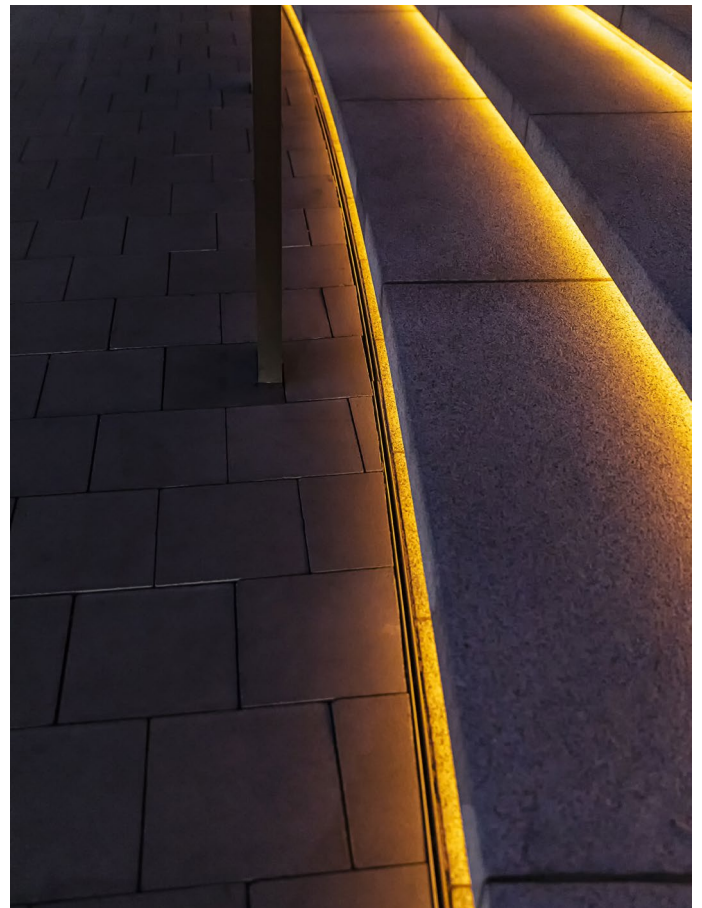
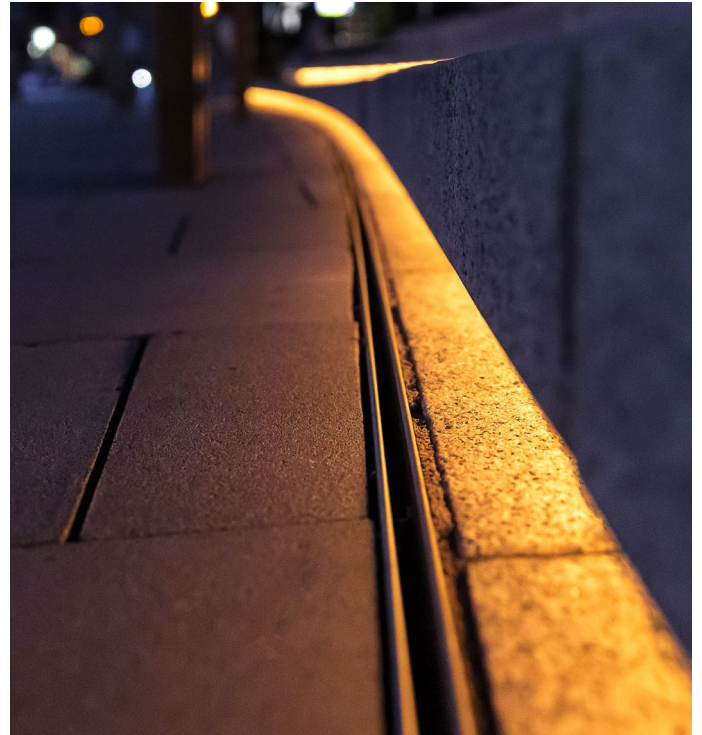


### OUTSIDE STAIRS MAIN ENTRANCE

TTC stainless steel slot channels

### Curved stainless steel slot channels

→ TTC slot channels SR 15/1,  
stainless steel 1.5 mm, curved version,  
6 pieces each approx. 2,500 mm,  
channel width 153 mm, slot distance 10 mm,  
slot height 100 mm, total height 240 mm including  
front sides



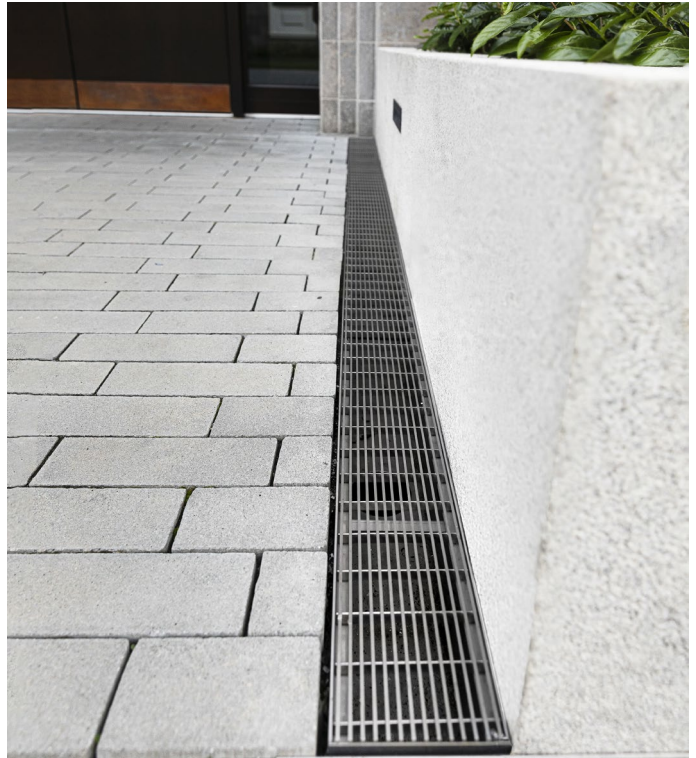


### INNER COURTYARD + PASSAGES

Façade and surface drainage

#### Façade channels + grid covers

- 131 metres, TTC façade channels FR/U rigid, stainless steel 1.5 mm, closed version, channel width 195 mm, channel height 120 mm, mounted front walls, lateral welded drain nozzle DN50, grid cover with one-sided overhang 35 mm
- TTC façade channels FR/U rigid, stainless steel 1.5 mm, closed version, 4 units 5,750 mm long, 2 units 1,460 mm long, channel width 145 mm, channel height 150 mm, mounted front walls, lateral welded drain nozzle DN50, including grid locking with one-sided overhang 35 mm for connection to façade
- Approx. 157 metres TTC linear gratings KSM-V, stainless steel, longitudinal profile, profile width 3.4 mm, profile distance 7 mm





### INNER COURTYARD + PASSAGES

Surface drainage

#### Curved stainless steel slot channels

→ TTC slot channels SR 15/1,  
stainless steel 1.5 mm, straight version,  
2 units 4,500 mm long, 2 pieces each  
approx. 2,250 mm, channel width 150 mm,  
slot distance 10 mm, slot height 100 mm,  
total height 240 mm including front sides





### WATER BASIN

Drainage channels + grid covers

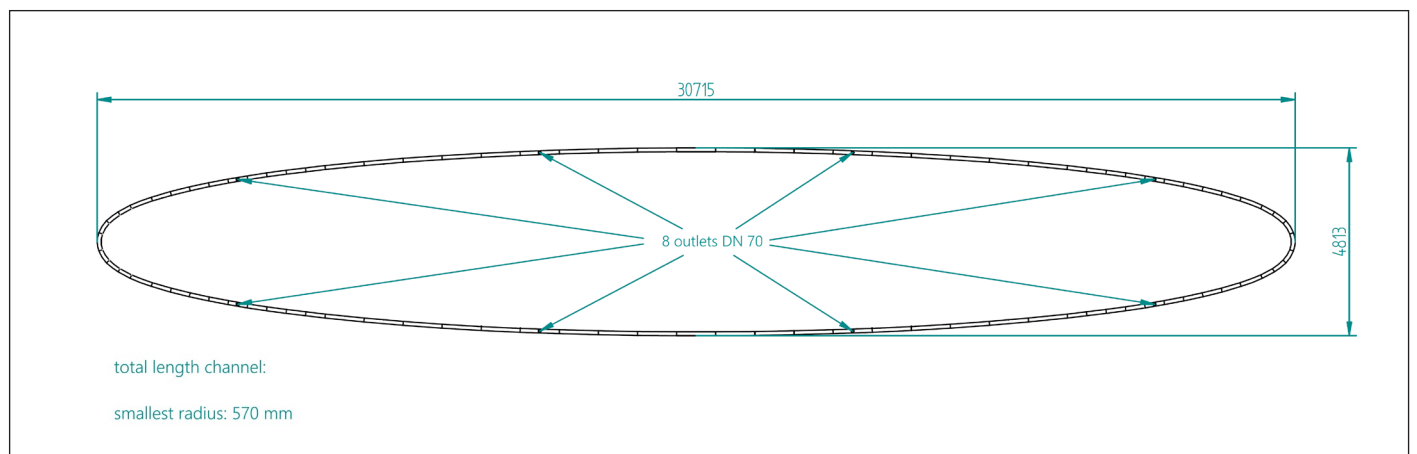
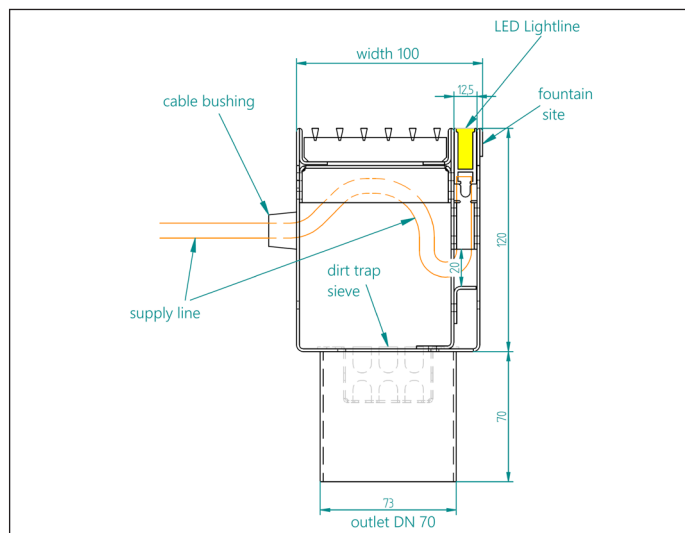
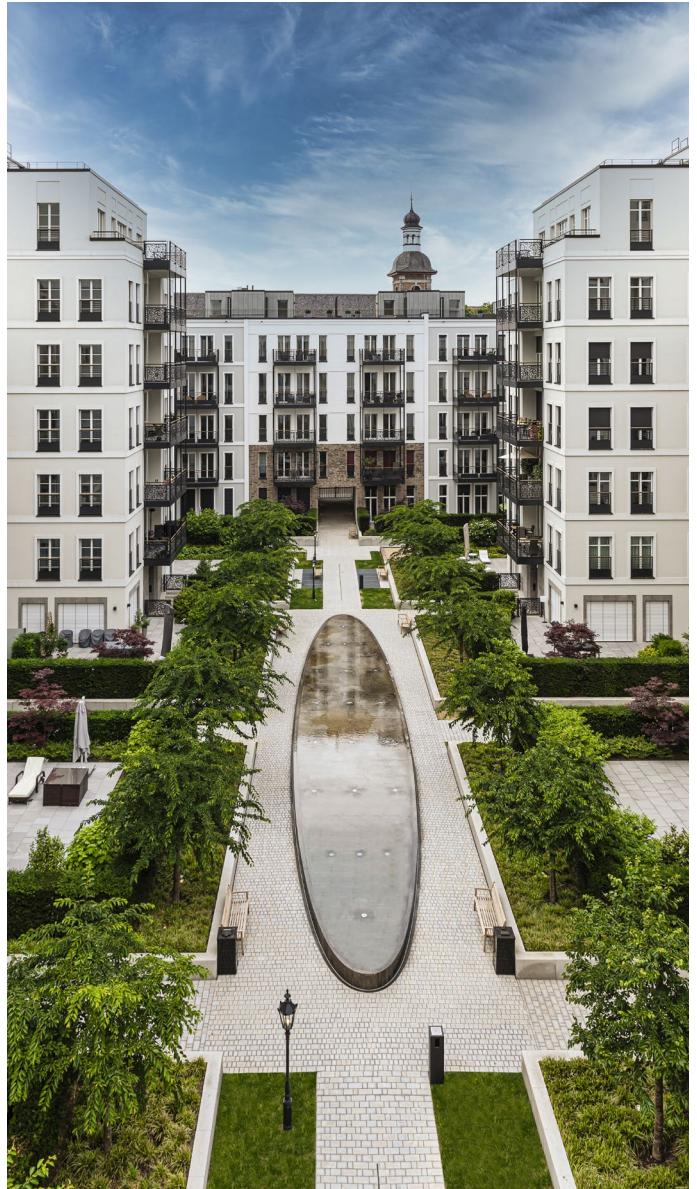
### DRAINLIGHT

[LED + drainage channel + grid]



## TTC Drainlight | channels + grids + light

- TTC drainage channels FR/U rigid, stainless steel 1.5 mm, closed version, channel width 100 mm, channel height 120 mm, with partition plates for receiving the LED light lines, support bracket and cable routing; including 8 units drain nozzles DN70, welded in channels
- Straight version with dual-sided polygonal cutting, approx. 56 metres with 38 units each 1,002 mm long and 36 units each 501 mm long
- Curved version with 5 different radii, approx. 7,7 metres with 4 units each 1,920 mm long
- Approx. 63,7 metres TTC linear gratings KSM-V, stainless steel, curved and straight version, longitudinal profile, profile width 3.4 mm, profile distance 7 mm





# EXCLUSIVE RESIDENTIAL ESTATE Düsseldorf



## WATER BASIN

LED light lines

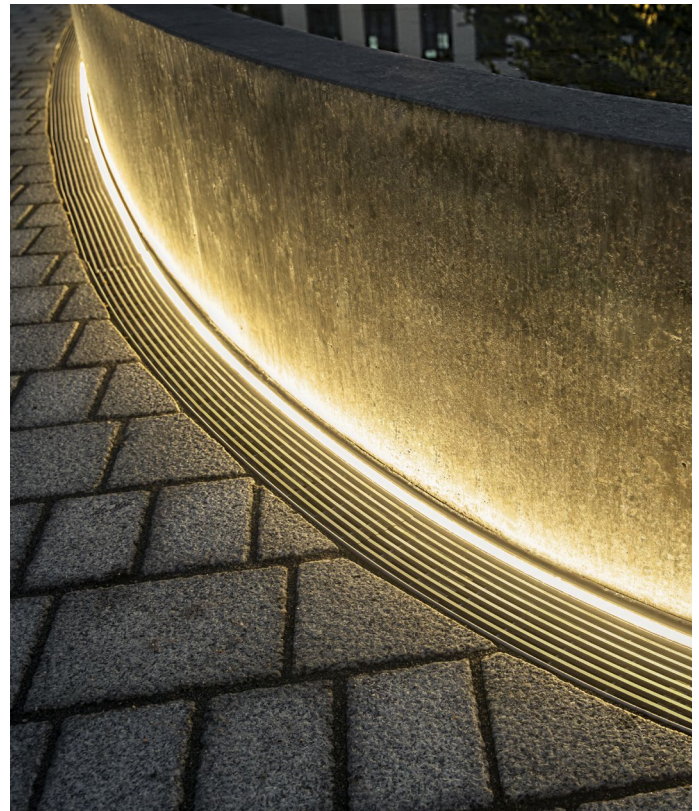
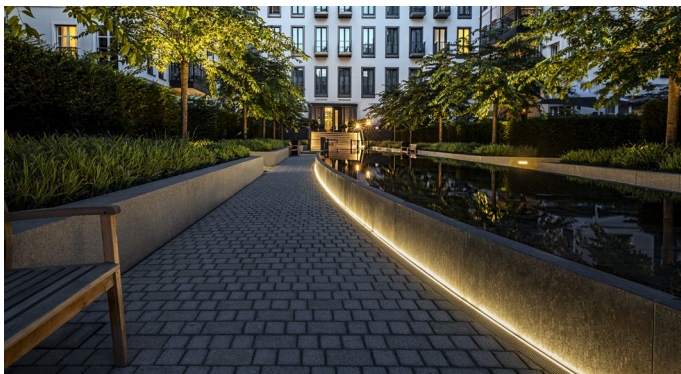
## DRAINLIGHT

[LED + drainage channel + grid]



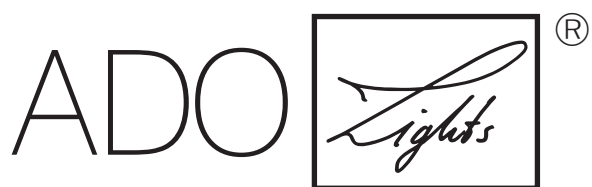
## TTC Drainlight | LED light lines

- LED light lines LLF.30.22 with TTC drainage channels, stainless steel, 12 mm wide, LED white, 3,000 K, 24VDC, 19W/m, opaque shed, IP68
- Straight version  
approx. 56 metres with 28 units each 2,005 mm long
- Curved version  
approx. 7.25 metres with 4 units each 1,814 mm long





TTC Timmler Technology GmbH  
Christian-Schäfer-Straße 8  
D-53881 Flammersheim [Cologne/Bonn]  
T +49 2255 9212-00  
F +49 2255 9212-99  
E [info@ado-lights.com](mailto:info@ado-lights.com)  
I [www.ado-lights.com](http://www.ado-lights.com)  
[www.led-luc.com](http://www.led-luc.com)



by TTC Timmler Technology

