
CLIENT | ARCHITECT | LIGHT PLANNING

die developer, Düsseldorf | Daniel Libeskind, New York/Zurich
Lichtvision, Berlin/Munich

Aesthetical down to the smallest detail

The Kö-Bogen in Düsseldorf: With its curved shapes this complex of buildings constitutes an urban planning highlight. Star architect Daniel Libeskind has combined white natural stone and glass. However, apart from smooth fronts there are also diagonal cuts on two sides of the façade into which hanging gardens have been integrated. A bold idea requiring sophisticated implementation. On such an exceptional building every detail counts. Everything has to be just right, from the concept to the quality of the materials. This is where TTC Timmler and ADO Lights make their contribution – with high quality products that fit in perfectly.

This includes unobtrusive slotted drains made from stainless steel to accentuate building outlines with their integrated illumination. Homogeneous grating design to drain the façades all around the Kö-Bogen underlines the aesthetically pleasing overall impression. In the entrance areas the bar spacing was chosen

in such a way as to be kind even to stiletto heels. Furthermore, the intelligently finished surfaces of the linear gratings on the doors provide an anti-slip effect. In combination with the embedded doormats this prevents as much dust and other particles as possible from being walked in to the building.

The green inner courtyards are a real highlight: Instead of a comprehensive illumination the atmospheric lighting provides well aimed accent lighting. This is achieved through light lines on the planters – an effect that can also be found in the outdoor area around the intake structures. The trees in the inner courtyards are also put in an atmospheric limelight. This is done using spotlights because their low thermal output does not affect the plants.

The Kö-Bogen won the prestigious MIPIM award. Even from afar the observer can see why but also when he takes a closer look.



TASK

Slotted channels, partly with LED lighting

FAÇADE CHANNELS + HOMOGENEOUS GRIDS

[Exterior]



Slotted channels | Products

Slotted drainage channels

- 190 m slotted drainage channels fully made of stainless steel
- Straight and curved versions according to façades
- Drainage slots 10 mm, 200 mm height, asymmetric version

Slotted channels | Products

Slotted channels with LED

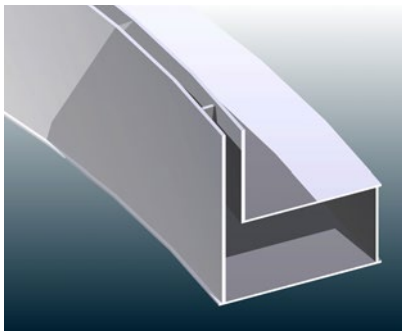
- 42 lfm slotted drainage channels with LED-LightLines
- Structural elements intake structures
- Light colour: warm white | 3,000 K
- IP68 sealed | 19 W/m | converter 24 V dimmable



FAÇADES + INTAKE STRUCTURES

FAÇADE CHANNELS + HOMOGENEOUS GRIDS

[Exterior]



On the left:
slotted drainage channels
fully made of stainless steel

On the right:
Detail LED-LightLine



TASK

Façade channels on buildings, entrance areas + courtyards

FAÇADE CHANNELS + HOMOGENEOUS GRIDS

[Exterior]



Façade channels | Products

Exterior areas | Public areas

- 220 m façade channels made of stainless steel with lateral drainage and discharge nozzle in entrance areas
- Linear grids made of stainless steel, fully welded
- Bar spacing: 10 mm; 5 mm in entrance areas [can be walked on with stiletto heels]
- Bar spacing consistent on channel edges, for homogeneous junctions on façade and entrance areas

Façade channels | Products

Courtyards | Office areas

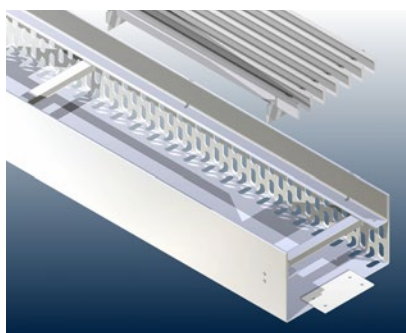
- 200 m façade channels made of stainless steel with lateral drainage
- Linear grids made of aluminium anodized and fully welded
- Bar spacing: 10 mm
- Bar spacing consistent on channel edges, for homogeneous junctions on façade and entrance areas



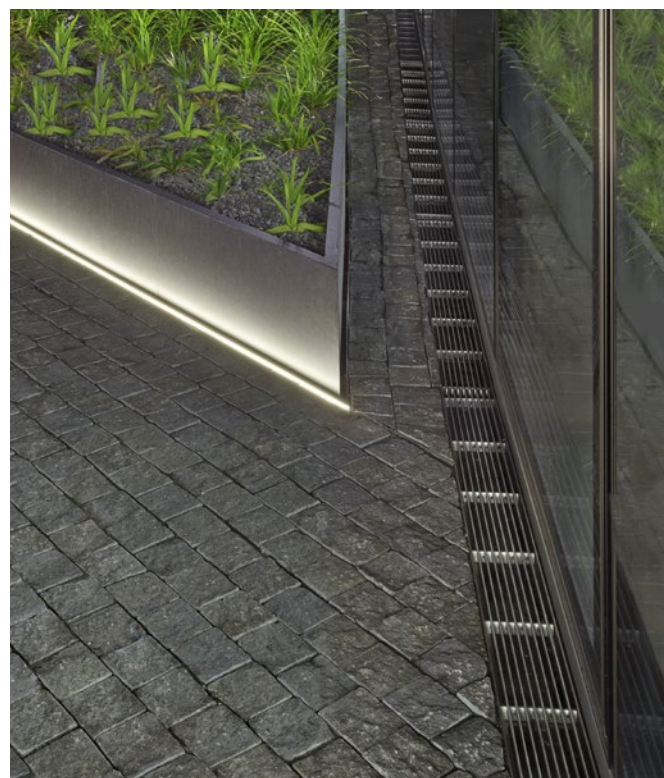
FAÇADES ENTRANCE AREAS + COURTYARDS

FAÇADE CHANNELS + HOMOGENEOUS GRIDS

[Exterior]



On the left:
Façade channel FR-10K
fully made of stainless steel



TASK

Entrance area

HOMOGENEOUS GRIDS + DOORMATS

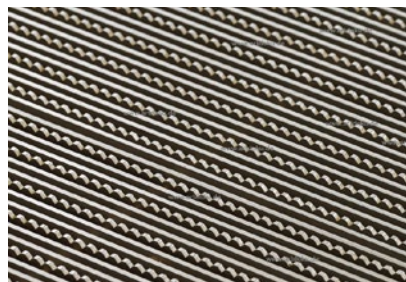
[Exterior/Interior]



Mats | Products

Doormats + absorption tubs for entrance areas

- 220 m² high-quality doormats, B1
- 5 mm bar spacing [can be walked on with stiletto heels]
- Colour anthracite, skid resistance R10
- Soil absorption tubs made of stainless steel with sub-construction for wider span length
- Visible frame edge, layer profile, cuts, dips or bevels in coordination with architects/client



On the left:
Detail doormats
Minimalausklüngen

Grids | Products

Grids for entrances | Breuninger + car parks

- Similar optic as façade grids
- 40 m² linear gratings in stainless steel, fully sealed
- 5 mm bar spacing [can be walked on with stiletto heels]
- One of three bars with **Minimalausklüngen** for skid resistance R10
- Soil and water absorption tubs made of stainless steel with subconstruction for wider span length
- Visible frame edge, layer profile, cuts, dips or bevels in coordination with architects/client

Grids for entrances | remaining areas

- 15 m² linear grids made of stainless steel KSM-V2.8
- 7 mm bar spacing

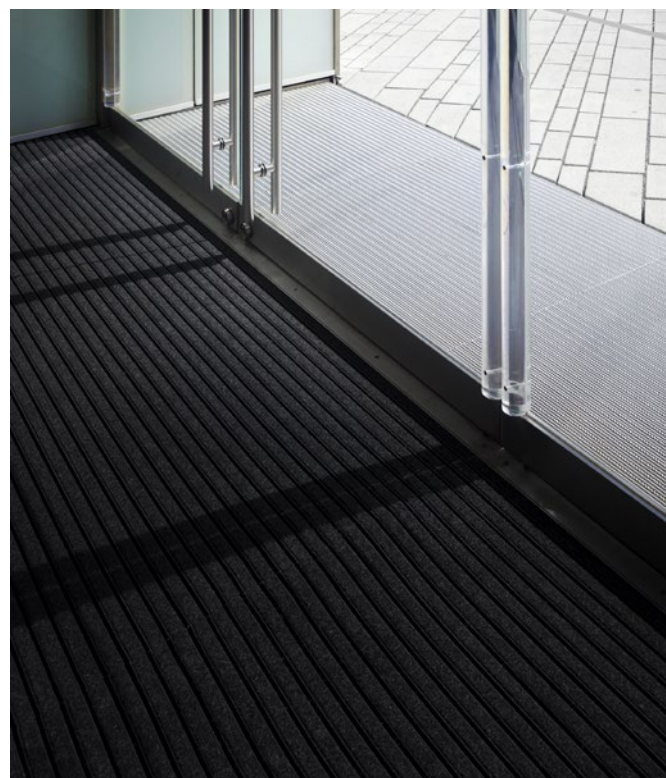


KÖ-BOGEN Düsseldorf



ENTRANCE AREA

HOMOGENEOUS GRIDS + DOORMATS
[Exterior/Interior]



TASK
LED-LightLine

DRAINLIGHT
[Exterior lighting for slot channels]



Task

Accentuated, partial illumination on the edges of the intake structures plus light effects in the two courtyards.

Solution

Intake structures serve the ventilation requirements of a building, hence they are practical – but at the same time very visible. 42 m of LED-LightLines in warm-white, integrated in the slotted channels, make the two intake structures of the trendy Kö-Bogen look like luminous objects.

In the courtyards, which do not have illumination in the traditional sense, approximately 100 m of LED-LightLines trace the contours of the planters with a warm-white light. This results in an exceptionally harmonic bond between high tech and nature. This masterful manoeuvre is part of the overall concept: Since the bridge linking the two parts of the building is indirectly illuminated using LED-LightLines. In addition, twelve LED spotlights are used to strikingly highlight trees in planters. The result is an unusual ambience and its light mood also serves as an eye-catcher for people working in the adjacent offices.

Products

LED LightLine for slot channels | Planters in courtyards

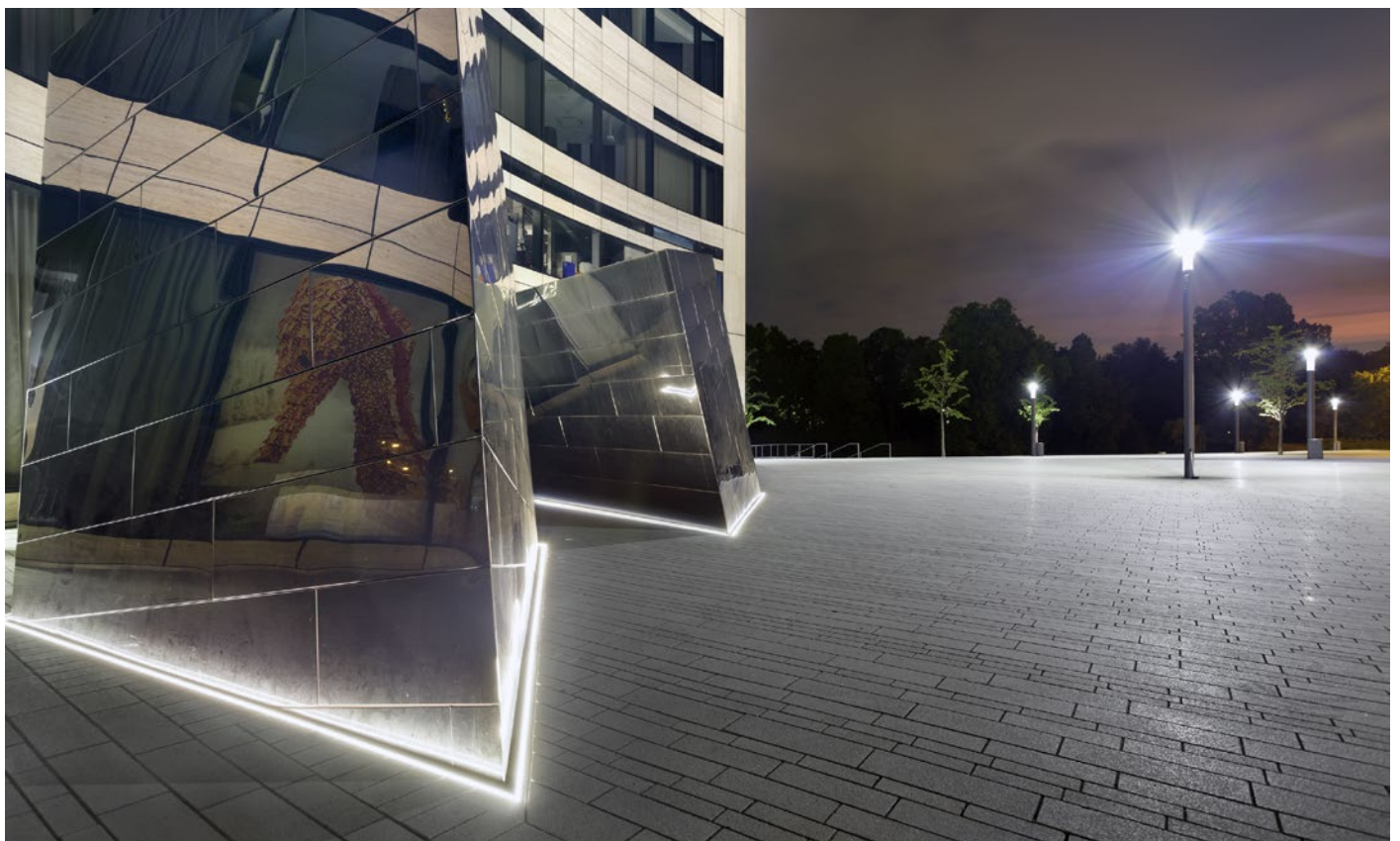
- Due to reflection at the planters sufficient as escape lighting
- 95 m | straight and curved versions
- Light colour: warm white | 3,000 K
- IP68 sealed | 19 W/m | converter 24 V dimmable

LED-LightStrip | Bridge linking between buildings

- 53 m for indirect lighting of the bridge linking between the buildings
- Light colour: warm white | 3,000 K
- IP65 | 19 W/m | converter 24 V dimmable

LED-Ground-level spots | Illumination of trees

- 8 pieces | 150 x 150 mm
- Light colour: warm white | 3,000 K
- IP65 | 12 W
- glare-free light spread | light beam angle 45° directional



INTAKE STRUCTURES + PLANTERS

DRAINLIGHT

[Exterior lighting for slot channels]

