

LED-DRAINLIGHT

Slotted Drain VA with
LED-LightLine AL

LED-DRAINLIGHT

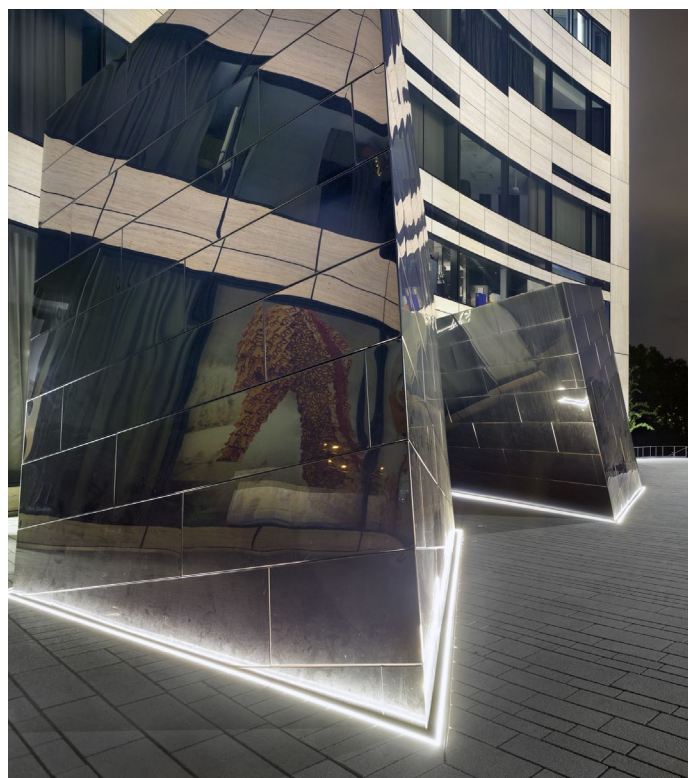
Built-in slotted drain made of stainless steel
with LED-LightLine made of aluminium

.....

ADO 

PICTURES

.....



LED-DRAINLIGHT

Built-in slotted drain made of stainless steel
with LED-LightLine made of aluminium



BASE INFORMATION AND GENERAL TECHNICAL SPECIFICATIONS



LED-Drainlight | Drainage + Illumination

A forward looking solution, connecting aesthetic aspirations and practical requirements. For exterior applications: LED Drainlight combines stainless steel drainage channels with an impressive LED illumination of buildings..

So beautiful, so useful: This LED Drainlight model allows rainwater to be reliably drained away through stainless steel draining channels. Works whatever the weather – come rain or shine.

LED-Drainlight with LightLine AL

Luminous lines when darkness falls. Sometimes an eye-catcher. At other times showing the way. They accentuate entrance areas or emphasize architectural contours. Lightlines can be integrated in façades and floor spaces – they are always an optical highlight.

Features

- For detached houses, villas, hotels, museums, parks, gardens, churches, castles, historic buildings
- Illumination out of the drainage system out of the ground
- Interactive integration into existing medial light systems
- The light colours are dimmable and controllable using DMX

DIMENSIONS [W X H]

SLOTTED CHANNEL VA:
150 x 200 mm | Length variable
LIGHTLINE AL:
12 x 30 mm | Length variable

POWER CONSUMPTION

24 VDC | 19 W/m

LIGHT BEAM ANGLE

Diffus

SERVICE LIFE

50,000 hours at
70% of mean luminous flux

COLOUR TEMPERATURE

White | 3,000/4,000 Kelvin
or multicolour RGB/RGBW

CRI

CRI > 85

CONTROL INTERFACE

DMX512, 4 channels

IP RATING

IP68

CERTIFICATES

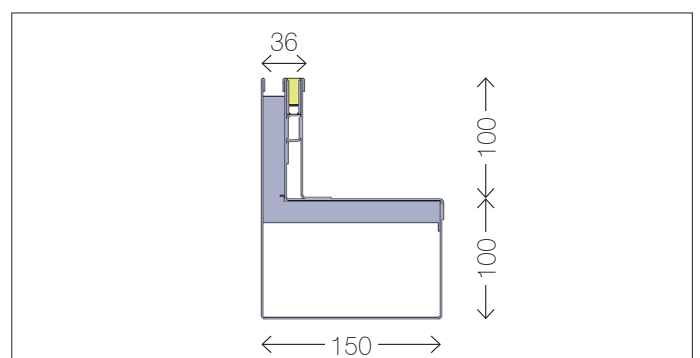
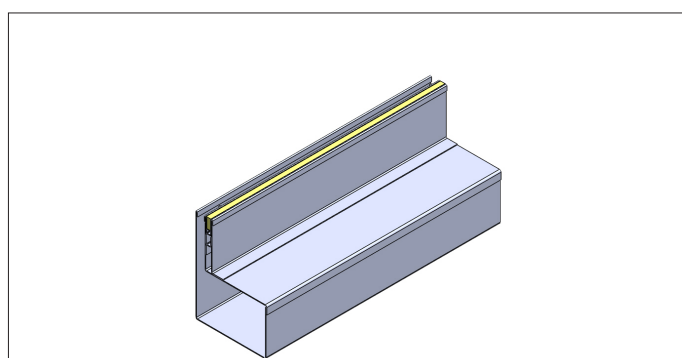
CE, RoHs

INSTALLATION HOUSING

Stainless steel, aluminium

COVER

High quality PU seal, able to drive over up to 1.5 t wheel load



TTC Timmler Technology GmbH
Christian-Schäfer-Straße 8
D-53881 Flammersheim [Cologne/Bonn]
T +49 2255 9212-00
F +49 2255 9212-99
E info@ado-lights.com
I www.ado-lights.com
www.led-luc.com



by TTC Timmler Technology

